

**FIGURE 11: Sphere of Influence Amendment Area
With 2005 LRDP Land Use Map**

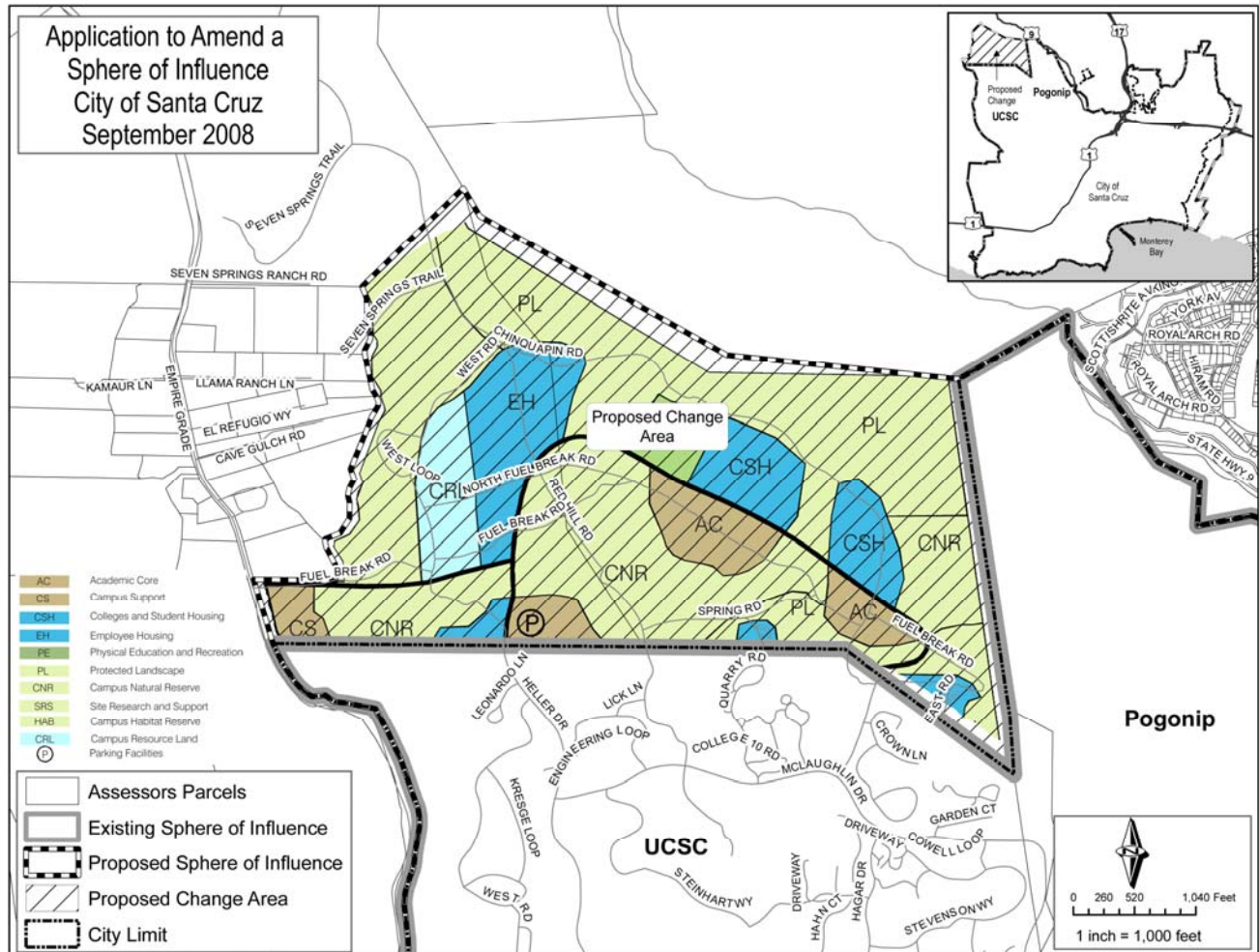
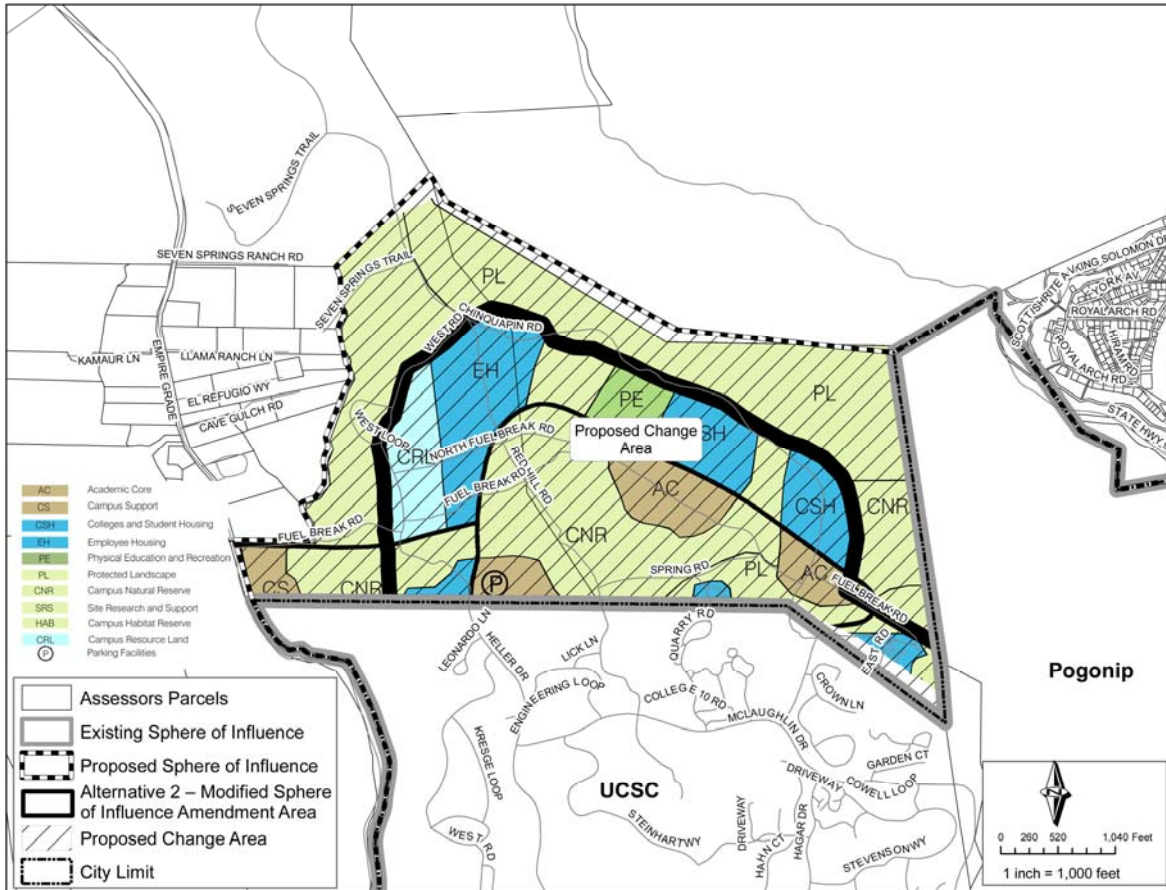




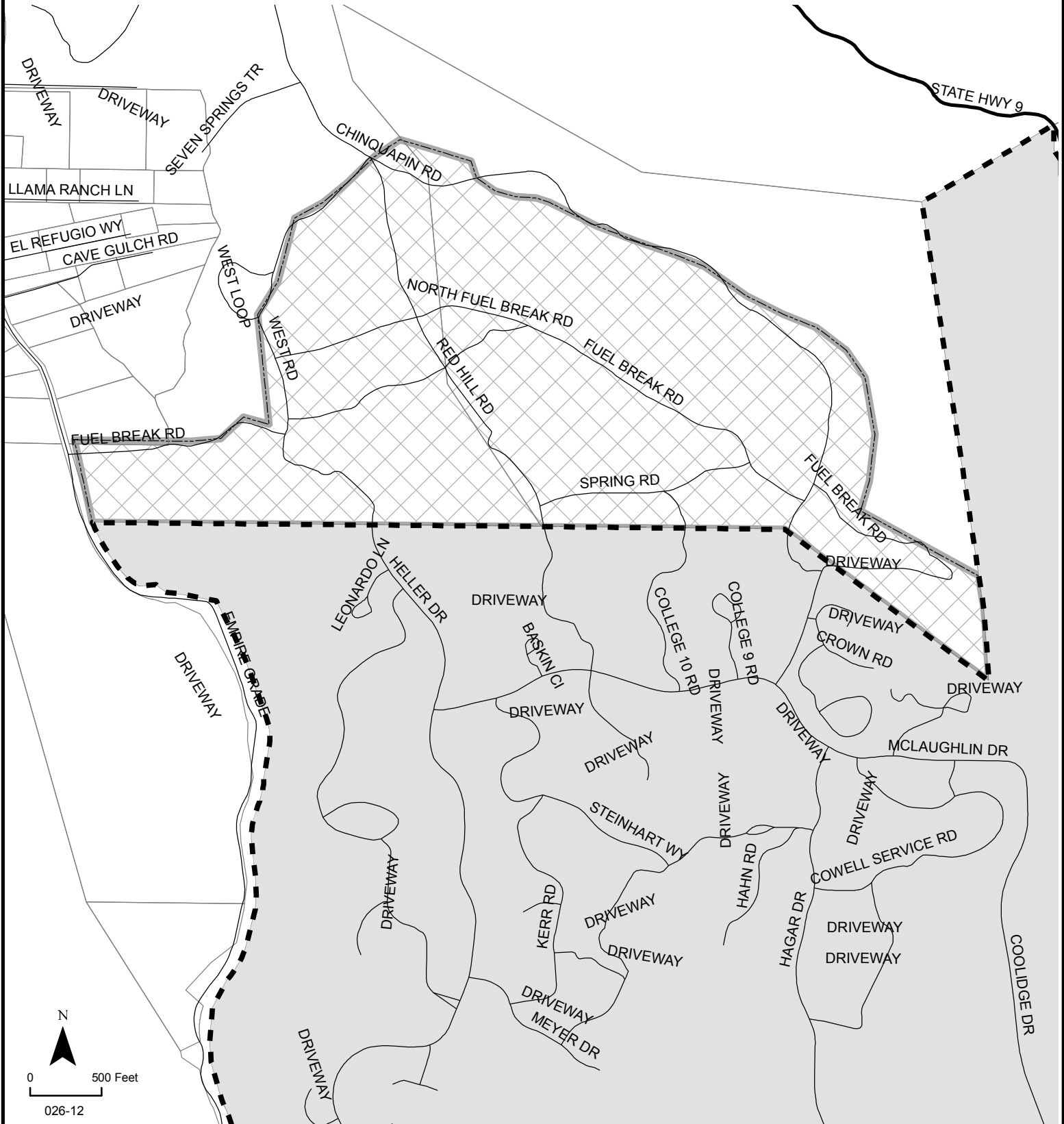
FIGURE 18: Alternative 2: Modified Sphere of

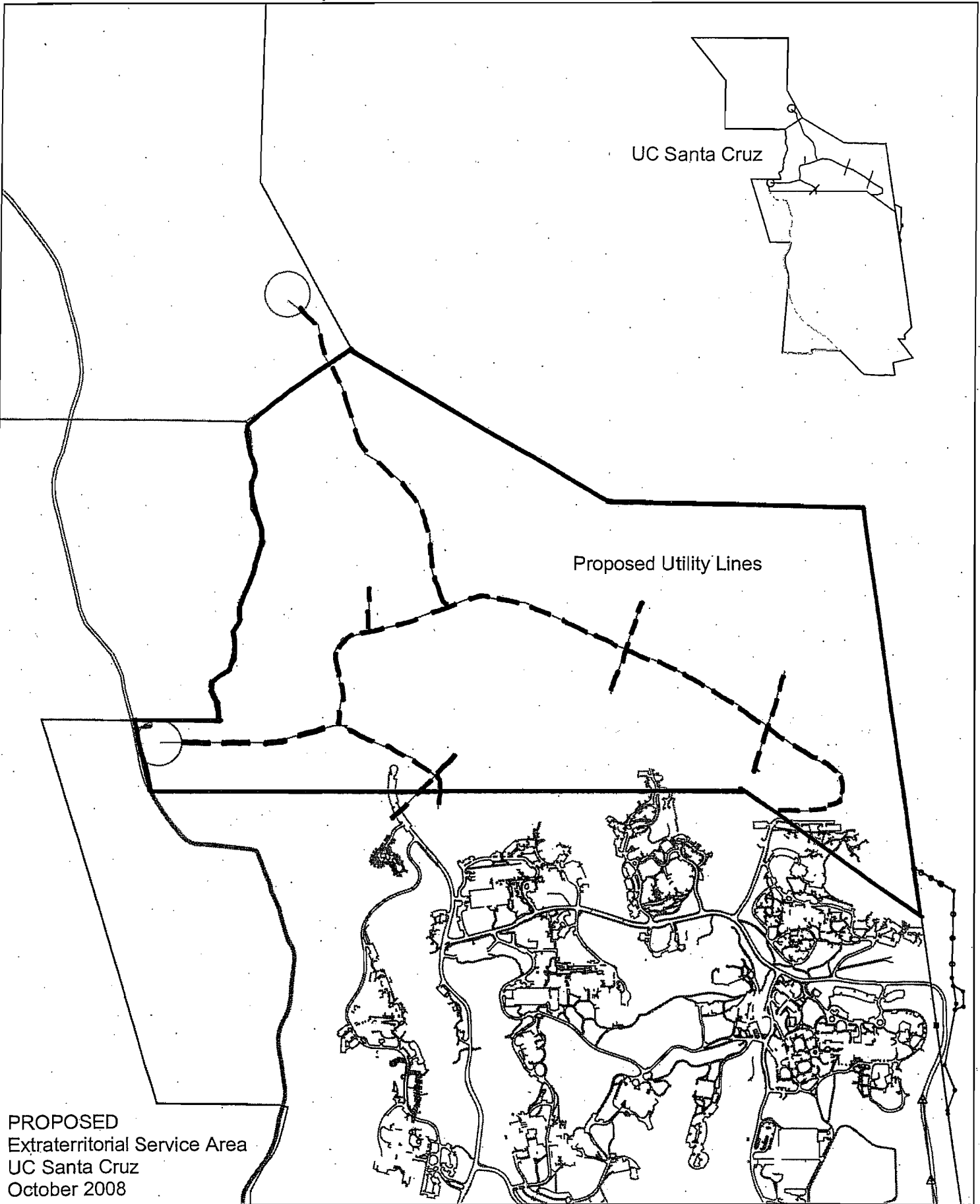
Influence Amendment Area



LAFCO RESOLUTION NO. 928/929
EXHIBIT "D"
MAP OF EXPANDED CITY OF SANTA CRUZ SPHERE OF INFLUENCE AND
WATER AND SEWER SERVICE AREA

-  Expanded Sphere and Service Area by LAFCO Resolution No. 928/929
-  February 2012 City Boundary, Sphere, and Service Area



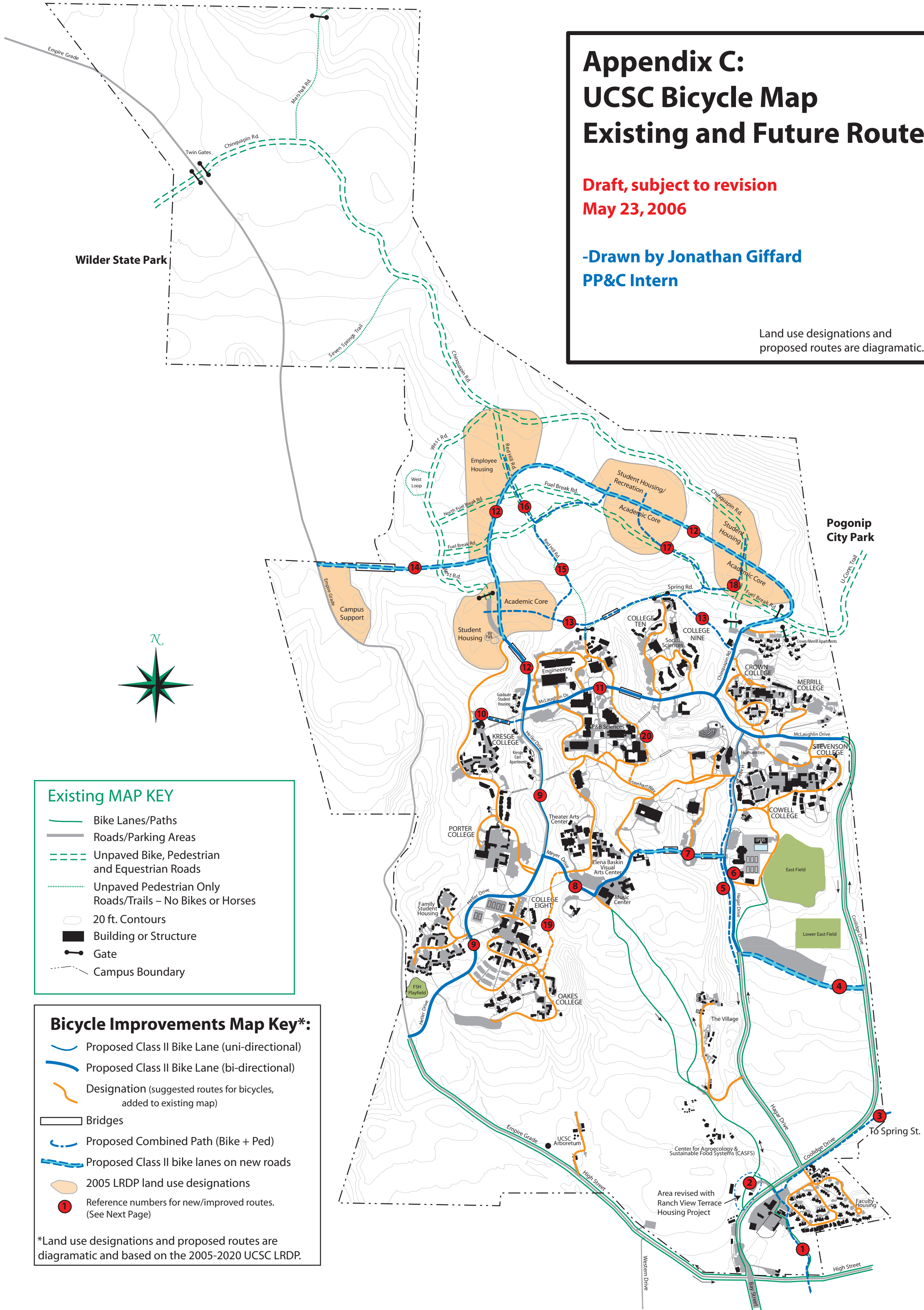


Appendix C: UCSC Bicycle Map Existing and Future Routes

Draft, subject to revision
May 23, 2006

-Drawn by Jonathan Giffard
PP&C Intern

Land use designations and
proposed routes are diagrammatic.



Existing MAP KEY

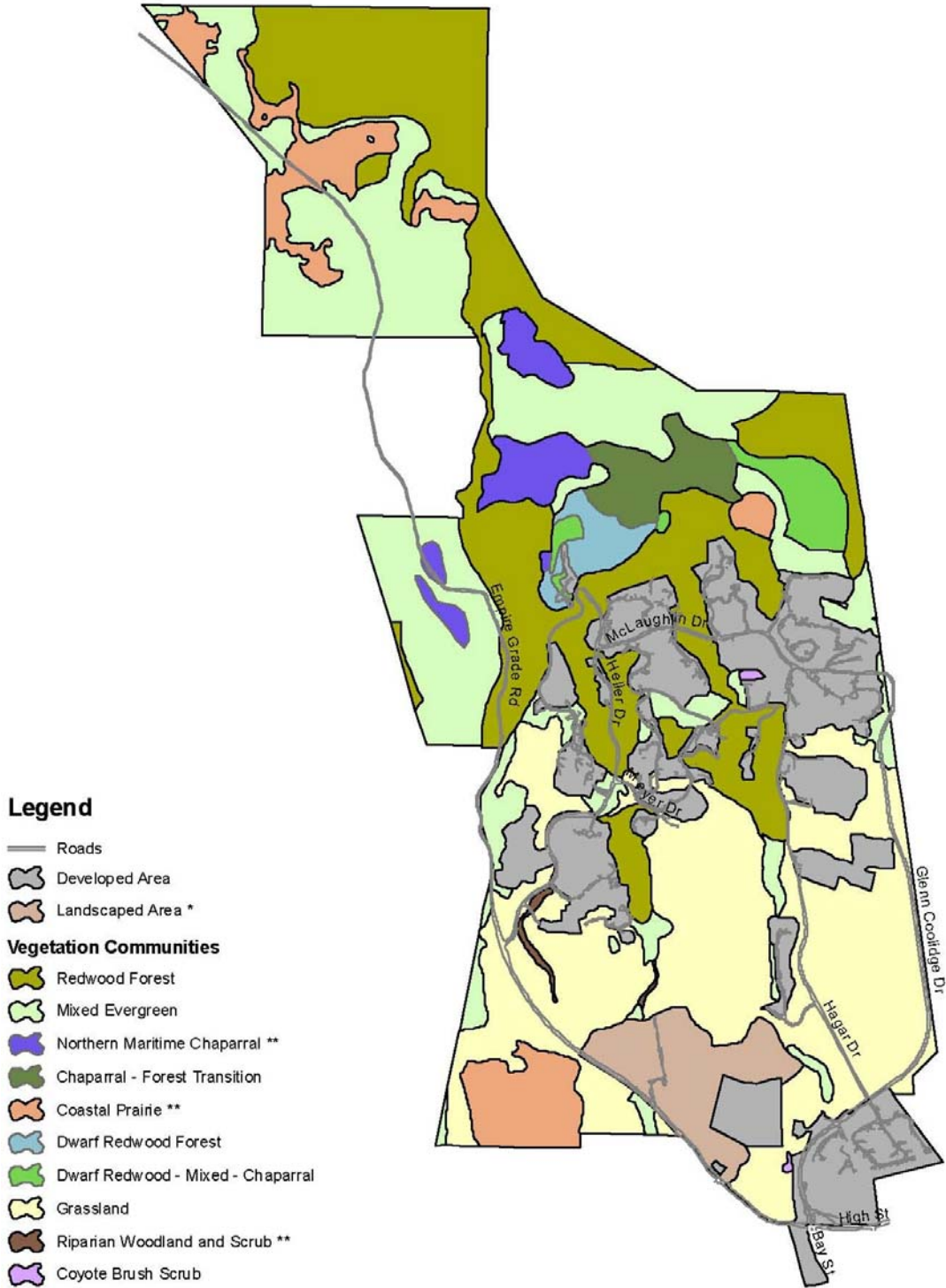
- Bike Lanes/Paths
- Roads/Parking Areas
- Unpaved Bike, Pedestrian and Equestrian Roads
- Unpaved Pedestrian Only Roads/Trails – No Bikes or Horses
- 20 ft. Contours
- Building or Structure
- Gate
- Campus Boundary

Bicycle Improvements Map Key*:

- Proposed Class II Bike Lane (uni-directional)
- Proposed Class II Bike Lane (bi-directional)
- Designation (suggested routes for bicycles, added to existing map)
- Bridges
- Proposed Combined Path (Bike + Ped)
- Proposed Class II bike lanes on new roads
- 2005 LRDP land use designations
- Reference numbers for new/improved routes. (See Next Page)

*Land use designations and proposed routes are diagrammatic and based on the 2005-2020 UCSC LRDP.

FIGURE 16: UCSC On-Campus Habitats



SOURCE: URS Corporation, 2005 LRDP EIR

Map showing relationship of proposed development to seep zone (gray shaded)

